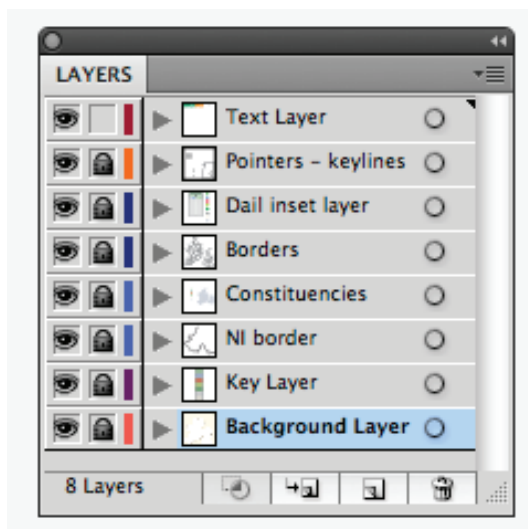


How to use the Ireland Election map kit

The election map comes as a kit in Adobe Illustrator CS2 format.

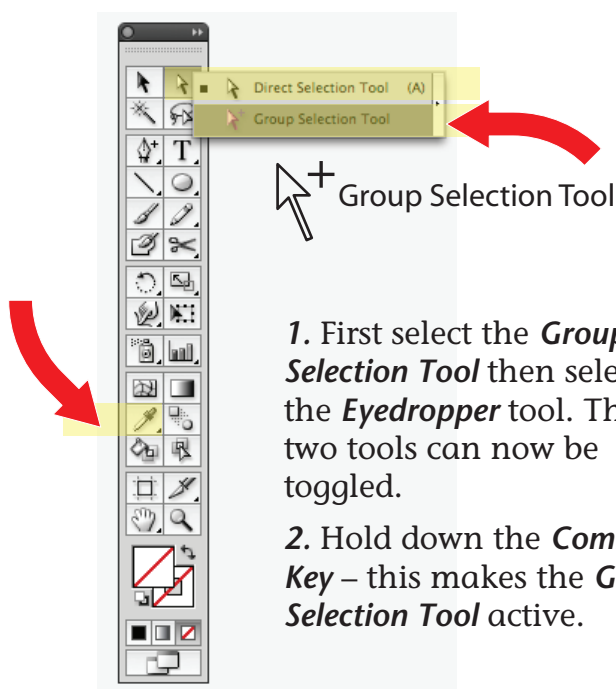
It is constructed in layers and views – there are eight layers and three views. All the artwork can be modified to suit your house style and scaled to fit your layout.

It is recommended that you have the **Layers** window open on your desktop. Use the **View** pull down menu to access the views.



The Views: There are three views – **Full View**, **Data Entry View** and **Dail Inset View**.

Data Entry View: This unlocks the **Constituencies** layer. This is the active layer to colour the constituencies.



1. First select the **Group Selection Tool** then select the **Eyedropper** tool. These two tools can now be toggled.

2. Hold down the **Command Key** – this makes the **Group Selection Tool** active.

3. **Command-click** twice on the constituency name to the left of the graphic. This highlights both the constituency and its name.

4. Release the **Command Key** – this makes the **Eyedropper** tool active.

Use the Eyedropper to click on a party colour and colour the constituency.

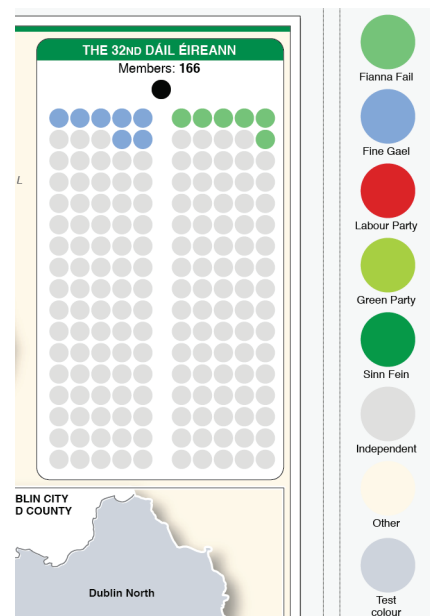
5. Hold down the **Command Key** again to make the **Group Selection** tool active. Repeat steps 3, 4 and 5.

Dail inset layer:

Select this layer to colour the seats in parliament. Each side of the chamber has 17 rows of five-blob groups.

With the speaker this gives a total of 171 seats, five more than is needed (166 seats).

The bottom rows can be trimmed (or coloured white) to reflect the balance.



Again use the **Group Selection-Eyedropper tool combination** as above.

Command-Click twice to select a group of five blobs to colour them.

To deselect a blob **Command-Shift-Click** on it.

When the graphic is complete simply delete the unwanted text/palette on the Constituencies and Dail layers.

Have fun.

Duncan – Graphic News